

# Grill Work Checklist

Checklist to help you have beautiful grills fitted precisely.

Grill is considered as the finishing material in building material. Grills are often used for Windows and balcony and sometime for doors. The key purpose of having grills is safety. And therefore it's extremely important to check grill and grill work before and during installation.

Grills are usually made of mild steel or iron bars. These bars could be square solid bar, rounded solid bars, square hollow bars, rounded hollow bars or just flat bars. These bars are welded together to give desired size and shape.



## Things to check before Grill

- Check the alignment of the grill, the vertical bars and horizontal ones too. the vertical bars should justly be vertical , and same with horizontal bars too.
- Check for smoothness at Joints. Ensure that the joints where two bars are welded are smoothness for one to not get hurt.
- Check for Primer in grill. Make sure the grill is painted with red oxide or other durable primer uniformly.
- Ensure the grill is uniformly painted too.

## Things to check during Grill Installation

- Check the grill alignment with wall
- Make sure Grill are machine screwed to walls with right size crews and hardware.

## Additional Guidelines

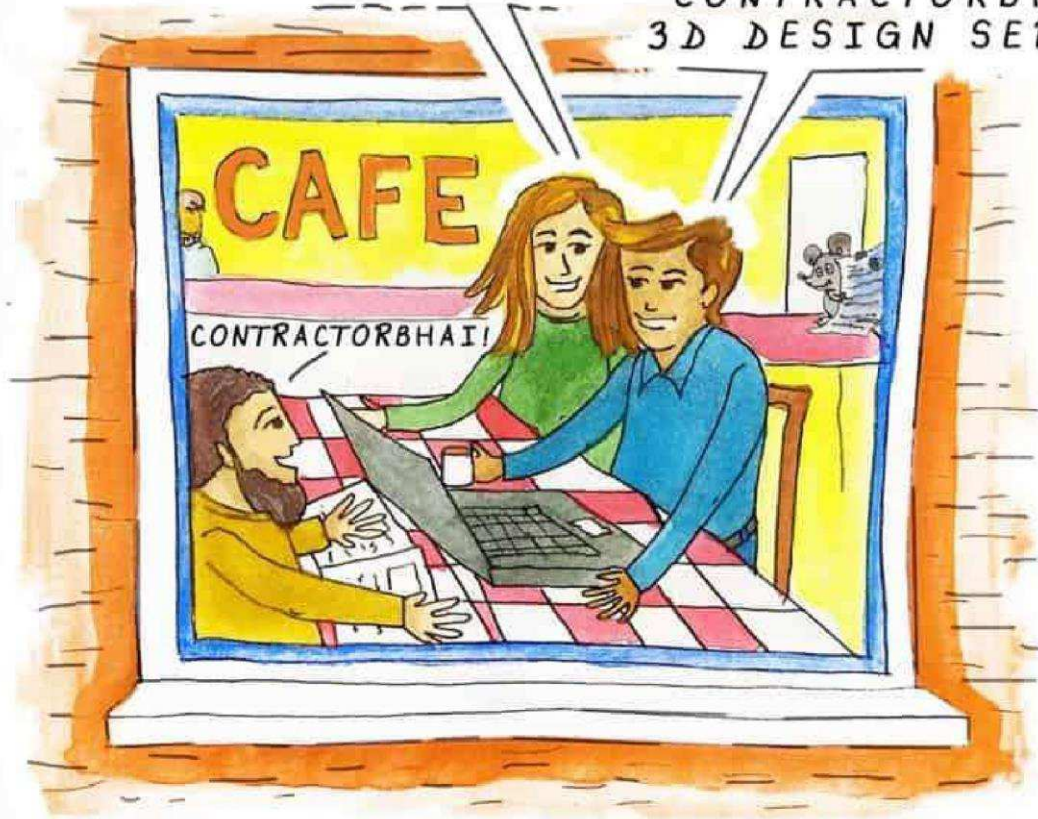
- For collapsible grills in balcony (which is a rare choice of design) make sure the runners are smooth so that you can open and close the grill easily.
- Having the runners of the upper side of the grill then on bottom can work as advantage when it comes to maintenance of grills.
- Make sure that the areas where the grills are screwed are finished with cement concrete if any breaking has taken place for better safety.

Know more on Grill work at

<https://www.contractorbhai.com/articles/>

HOME INTERIOR PROJECT  
IS PRETTY DEMANDING.  
HOW'D YOU MANAGE?

IT'S EASY  
WITH  
CONTRACTORBHAI'S  
3D DESIGN SERVICE



Last Year alone,  
**Contractorbhai's Design Service**  
helped over 1,000 Home Owners finish their Projects.

[SHOW ME HOW 3D DESIGN SERVICE WORKS](#)